



ALMAG

Magnetic Partially Filled flow meter

ALMAGPF

Cancoppas
LIMITED

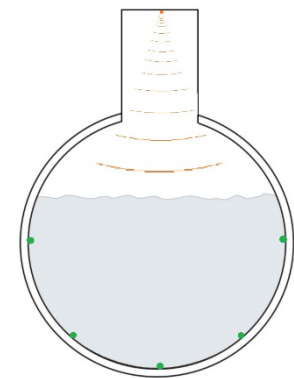
GENERAL

SmartMeasurement's ALMAGPF is an electromagnetic partially filled pipe flow meter featuring an electromagnetic flow velocity sensor combined with a liquid level sensor for a complete and continuous area-velocity flow measurement. The ALMAGPF transmitter automatically displays the instantaneous flow, fluid velocity, cumulative flow and self-diagnostic codes. Unlike flowmeters measuring the flow rate by means of fluid level alone, the obstructionless ALMAGPF flow-meter is not affected by mud, sands and other solid sediment because the sensors are on the opposite sides of the flow body. It is also unaffected by waves or floating solids on the fluid surface.



FEATURES

- Improved functional magnetic field distribution technique enables a continuous high-precision flow measurement from low-level to fully-filled pipe conditions.
- The obstructionless flow-meter does not usually allow mud, sands and other solid sediment to settle at the bottom of the detector pipe and is also unaffected by wave or floating solids on the fluid surface.
- Bi-directional velocity measurements.
- User friendly setup and diagnostic software

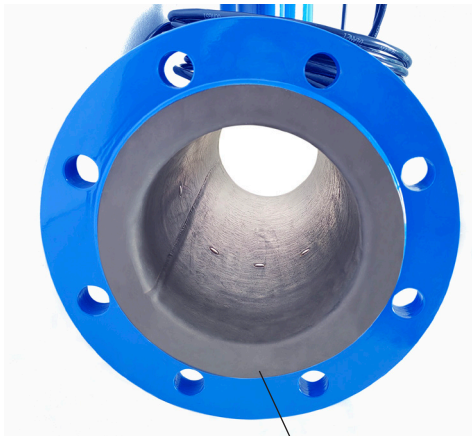


SPECIFICATIONS

- | | | | |
|-----------------------------|--|--------------------------------|---|
| • Line size: | 4"~40" (DN100~DN1000) | • Fluid conductivity: | >100 μ S/cm |
| • Accuracy: | \pm 2.5% FS (when measurement range is standard) | • Fluid temperature: | +32~+130°F (0~+55°C) |
| • Flow range: | 0.5~5 m/s | • Fluid pressure: | 0 psi or 0 bar (0 MPa) up to the pressure limited by flange standard (fully-filled condition) |
| • Level range: | 10%~100% D | • Display: | Flow velocity, flow rate, total flow, level |
| • Materials: | Liner - Chloroprene Rubber
Electrode - 316L, Ti, HC
Flow tube - SS# 304
Coating - Epoxy based paint | • Connection: | Flanged |
| • Output: | 4-20mA, pulse | • Straight pipe length: | 10D minimum on upstream side
10D minimum on downstream side |
| • Communication: | RS485, Modbus | • Transmitter: | Remote style |
| • Power supply: | 85~265V _{AC} 50/60 Hz | • Protection: | IP65 - std
IP68 - opt |
| • Power consumption: | < 20W | | |

FLOWBODY

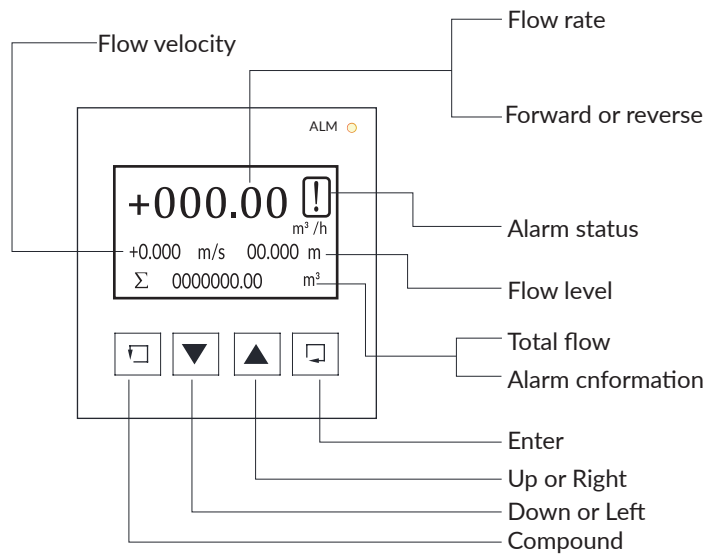
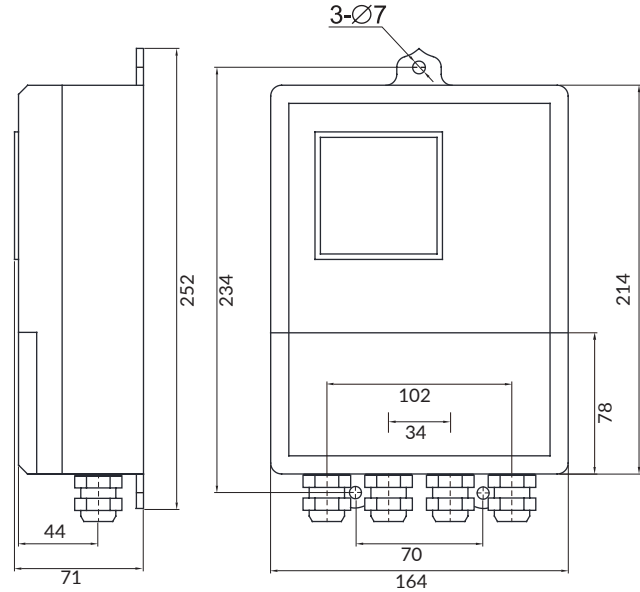
Level sensor



Flow sensor



TRANSMITTER



** Please contact your local SmartMeasurement application engineer
You also need to provide the following information:

TYPE OF LIQUID	Please provide the name of your fluid media, the operating PH, and conductivity .
FULL SCALE FLOW	Please provide the max and min flow rate, in units of CMH, GPM or LPM, etc.
CHANNEL SHAPE AND DIMENSIONS	Please indicate a nominal pipe diameter as well connection type (flange, threaded, etc..)

ALMAG -				TRANSDUCER STYLE
Partially Filled magnetic meter with remoter transmitter, display, pulse, 4-20mA output, RS485 communication, 85~265V _{AC} power supply. ANSI flange connection	PF			Transmitter
4"~40" (DN100 ~ DN1000)	**			Meter size
SS# 316		0		Electrode
Hast C		2		
Ti		4		
Chloroprene Rubber (Neoprene)		3		Liner
Other liner		**		
Standard - IP65			67	Protection
IP68 flowbody and IP65 transmitter			68	