

CALIBRATION STANDARDS

Primary Standard

Primary standards are Measurement Canada approved calibration proving devices. They include volumetric and gravimetric (weighing) proving equipment.

Secondary Standard

Secondary standards are often referred to as Master Meters. These high precision meters are traced through their entire operational flow range to a primary standard and calibrated on a quarterly basis against our prime standards.

Volumetric Provers

Conflow Technologies owns three Measurement Canada approved stainless steel volumetric provers. Their capacities are 20 Litres, 500 Litres and 2000 Litres. Volumetric provers are used for calibrating meters measuring in volumetric units.

Gravimetric Prover

Conflow Technologies owns one 2000 Kg platform scale certified by a Measurement Canada Accredited Service Provider. Gravimetric provers are used for calibrating meters measuring in mass units.

FLOW METERS WE CALIBRATE

Turbine Meter	Positive displacement meter
Coriolis meter	Electromagnetic meter
Ultrasonic meter	Vortex meter
Orifice plate	Variable Area
Pelton Wheel	

OTHER PRODUCTS/SERVICES WE OFFER

Flowmeters	PD340 Electro-Magnetic Flow Transmitter
	Turbine meters
	Insertion meters
	Ultrasonic meters
	Thermal mass meters
	Liquid/Gas applications
	Sanitary applications
	Cryogenic applications
	Industrial applications
	Battery powered precision portable meters
Flow Electronics	Signal conditioners
	Rate Indicators & Totalizers
	Batch Controllers
	Integration and installation of flow devices & systems
	Trouble shooting of flow measurement systems

FLOW BENCH SPECIFICATION

Media: Clean Chlorinated Water
Max. Flow Rate: 1950 LPM/515 USGPM
Max. Line Size: 4 inch / DN102
Construction: 316 Stainless Steel, Schedule 80 PVC
Connection Types: Tri-Clamp, JIC, NPT, 150# Flange
Water Storage Tank Construction: Plastic
Water Storage Capacity: 3785 L / 1000 US Gallons
Control Valves: 316SS Air Actuated and Manual
Control System: P-Net Fieldbus/Windows XP PC
Control System Software: Proprietary
Pumps: 316 Stainless Steel Construction
Motors: 3hp/15hp 550VAC VFD Controlled

PROVER SPECIFICATION

Volumetric Provers

Construction: 304 Stainless Steel
Size: 2000 Litre, SN: Q6375-002-93
500 Litre, SN: 00229
20 Litre, SN: 00-12325-04

Shell Temperature Calibration: 2000 Litre - 4°C
500 Litre - 15°C
20 Litre - 15°C

Certification Authority: Measurement Canada, Ottawa, Ontario
Seals: Measurement Canada Wire Seals on Neck Scale Plate and Drip Valves
Calibration Frequency: Variable as per Canada's Weights and Measures Act

Gravimetric Prover

Construction: Mild Steel 4'x 4' Floor Scale
Capacity: 2000 Kilograms, SN: 0000150
Sensitivity: 0.1 Kilogram
Registration: Electronic
Certification Authority: Saturn Scale Systems
(Measurement Canada Accredited Service Provider)
Calibration Frequency: Annually

Secondary Standard Specifications

Meter Type: PD340 Electro-magnetic
Manufacturer: Proces-Data A/S
Accuracy: +/- 0.10% or better over a 10:1 turndown
Size: One inch to Three inch.
Registration: Electronic and P-Net Fieldbus
Calibration Frequency: Quarterly
Calibration Reference: Prime Standards Volumetric Prover



Flow Measurement Devices Calibration Services



Process Integration and Measurement Solutions



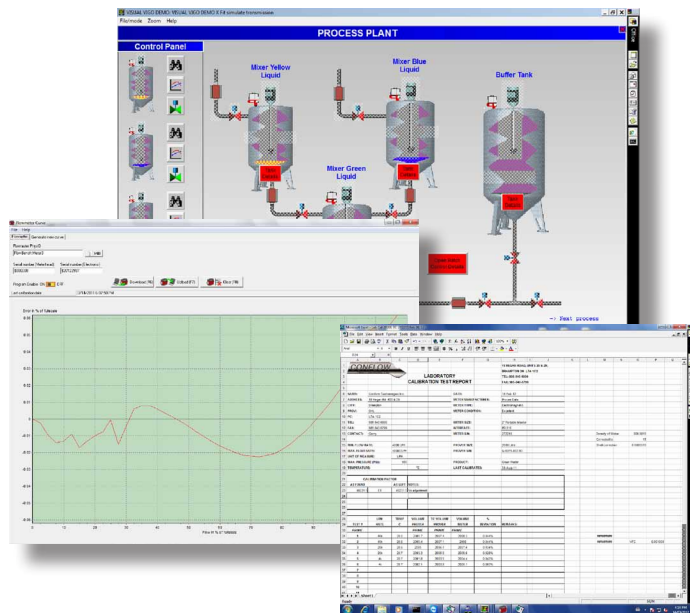
18 Regan Road, Units 28 & 29, Brampton ON CA L7A 1C2

Telephone: 905-840-6800 Fax: 905-840-6799

www.conflow.ca

Flow Meter Calibration Service

CONFLOW TECHNOLOGIES INC. SPECIALIZES IN VOLUMETRIC AND MASS CALIBRATION AND IS A REGISTERED SERVICE PROVIDER FOR MEASUREMENT CANADA. (Registration No. R340)



Why Calibration

METERS ARE YOUR FLOW ACCOUNTING SYSTEM!

You use precision equipment to optimize and evaluate process plant efficiency. A relatively small error of 1% over a large volume, say 100,000 litres of product in your measuring device, could mean an extremely high and critical cost to you. It is therefore essential in any business, to have flowmeters calibrated correctly.

There are several reasons why a flowmeter could be inaccurate. They can include wear and tear, hardware adjustments, age and programming changes. Despite these factors, a flowmeter can still provide highly accurate readings when properly calibrated. We recommend that flowmeters be calibrated a minimum every one / two years depending on type and service.

Why Conflow

WE DON'T JUST VERIFY FLOWMETERS, WE CALIBRATE THEM!

- Registered Measurement Canada service provider for volumetric testing and approval
- Over 20 years experience as metrology specialists & solution providers
- Specialized in legal for trade, stationary and mobile, custody transfer systems
- Provides both in-house and on-site calibration services using either Prime or Secondary Standards
- Calibrates all types and all brands/makes of flowmeters
- Offer service agreement for regular, timely and hassle-free calibration of your meters



Benefits of Calibration Agreements

- One of the best-equipped flow calibration facilities
- Traceability to Measurement Canada standards
- Flexible calibration service and repair programs
- Verifiable calibration records
- Fast turnaround
- Dedicated calibration services staff
- Technical support available during calibration

18 Regan Road, Units 28/29, Brampton, ON. CANADA L7A 1C2
Telephone: 1-905-840-6800 • Toll Free: 1-800-275-9887 • Fax: 1-905-840-6799

Flow Meter Calibration Service

In-house Calibration Service

Conflow Technologies has developed the only fully computerised sanitary calibration facility in the country. We use clean chlorinated water, and multiple variable frequency drive controlled pumps which allow us to calibrate all types of flow meters from extremely low flow rates up to 1950 litres per minute. Our facility is also used extensively for flow meter evaluation and research. In addition, we are able to evaluate air eliminator efficiency through the use of precision air flow instruments. Fully traced primary and secondary standards are used dependant on the application.



On-site Calibration Service

Conflow Technologies offers on site calibration services. All of our standards are mobile and can be transported to your facility where our technicians will calibrate your meters using your products. In plant calibrations are normally traced to our portable secondary standards. For custody transfer applications, our primary volumetric and gravimetric standards are deployed. The primary standards are Measurement Canada approved and sealed. Conflow has Measurement Canada Registered technicians assuring you of unquestionable calibrations.



18 Regan Road, Units 28/29, Brampton, ON. CANADA L7A 1C2
Telephone: 1-905-840-6800 • Toll Free: 1-800-275-9887 • Fax: 1-905-840-6799