

# Unleash Precision in Water Level Monitoring



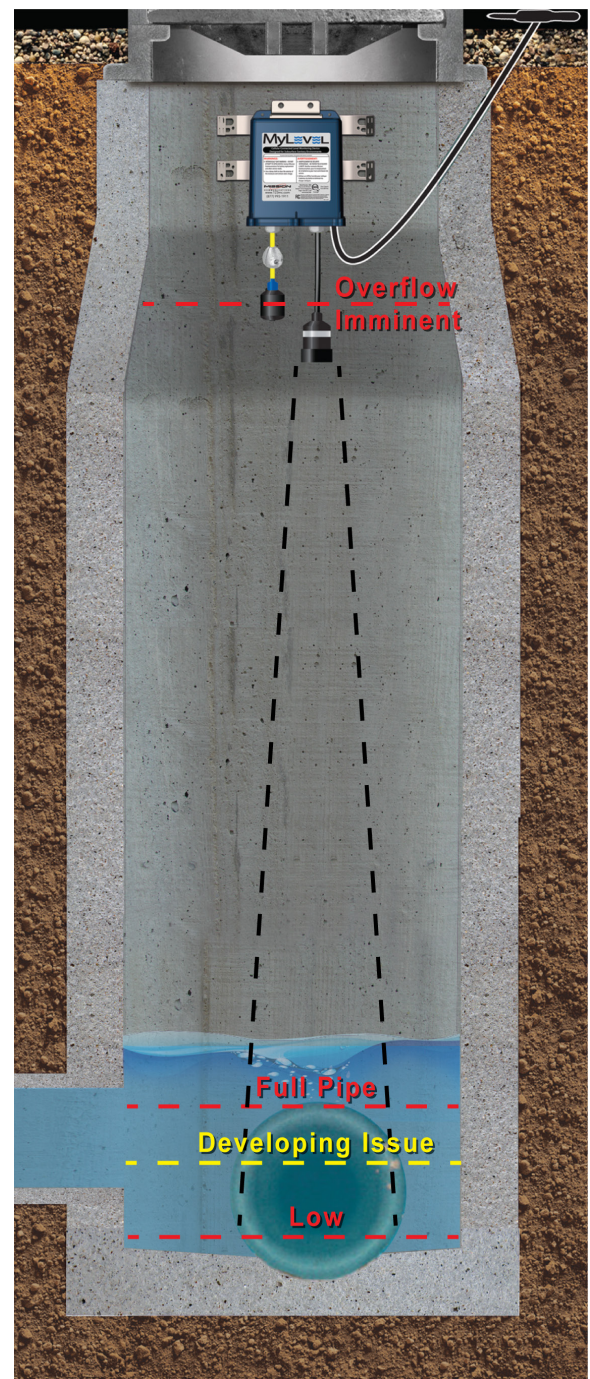
Discover the next level of combined sewer overflow (CSO) and sanitary sewer overflow (SSO) monitoring for subsurface sewer applications. The MyLevel is a battery-powered, cellular-connected solution that provides accurate and hassle-free ultrasonic level measurements. Engineered for diverse environments, MyLevel ensures high reliability and seamless connectivity, providing you with real-time insights when you need them. A MyLevel Float model is available.

## Key Features

- **Complete Dynamic Range:** From the bottom of the channel to the manhole cover, MyLevel offers a full dynamic range for comprehensive visibility.
- **Ruggedized Design:** Hardware built to withstand tough conditions including wet, high humidity, and corrosive conditions.
- **Reliable Connectivity:** MyLevel cellular technology maintains connectivity regardless of weather conditions.
- **Surge Resilience:** No measurement loss during surcharges, ensuring consistent and reliable readings.
- **Efficient Crew Mobilization:** MyLevel notifications allow mobilization of crews only when necessary, optimizing resources for effective monitoring.
- **Versatile Configurations:** Suitable for sewer manholes, open channels, canals, holding tanks, outfalls, wet wells, reservoirs, and utility vaults.
- **Low-Maintenance Design:** The sealed, IP68-rated sensor requires minimal maintenance for hassle-free operation.
- **Battery Life:** A compact, long-lasting battery powers MyLevel, ensuring up to three years of operation.
- **Two-Way Communication:** Remote settings management is made easy with MyLevel's two-way communication feature.
- **Robust, Intrinsically Safe, IP68-Rated Hardware:** Molded from carbon fiber ABS plastic and third-party certified for use in hazardous sewer environments.
- **Easy Install:** Simple mounting hardware fits to the inside wall just below the manhole cover for easy installation and maintenance.

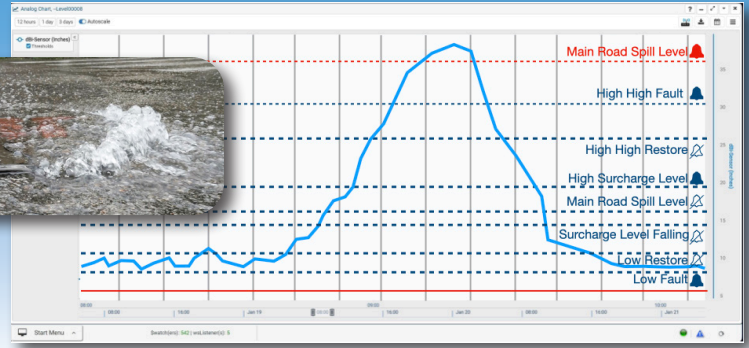
## Your Comprehensive Monitoring Solution

- **Secure Online Web Portal:** Access visual reports through a secure online web portal for easy configuration and monitoring.
- **CSO/SSO Monitoring:** Report sewer overflows and backups effortlessly, and help stay in compliance.



# Monitor Subsurface Manhole Levels and Protect from Sanitary Sewer Overflow (SSO)

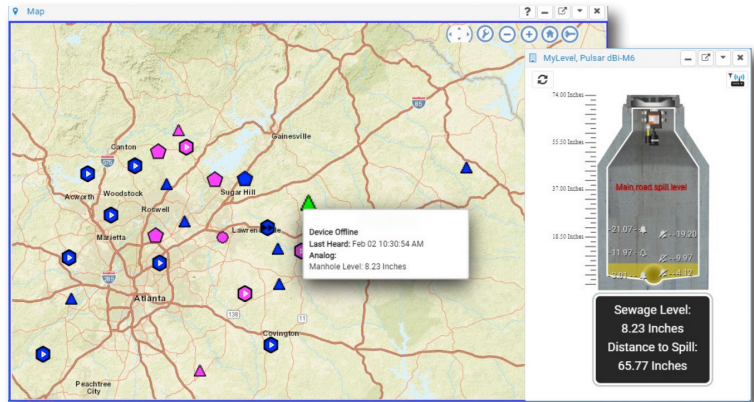
- Stay ahead of the curve. Avoid fines and cleanup costs from SSO.
- Set up as many real-time alarms as you need.
- Use the 123SCADA web portal to track the latest data visuals and event dashboard.



## Technical Specifications

### Performance Features

- **Accuracy:** Patented ultrasonic sensor design for precise measurements up to 49.2 feet (15 meters) from sensor face.
- **Weather Resilience:** Uninterrupted cellular connection, even during rain events or bad weather.
- **Data Integrity:** Providing precise and reliable readings through entire operating range.
- **Power Source:** Battery powered, no A/C.
- **Communication Features:** Network details, transmit and receive specifications.
- **Two-Way Communication:** Enables remote settings management for enhanced control.
- **Alarm/Event Reporting:** Within two minutes of the event.



### Settings

- **Sensor Sampling Intervals:** Every 4, 5, 6, 10, 30, or 60 minutes.
- **Reporting Intervals:** Every 1, 2, 4, 12, or 24 hours.
- **Mounting:** Manhole Mounting Bracket, Sensor Mounting Kit.

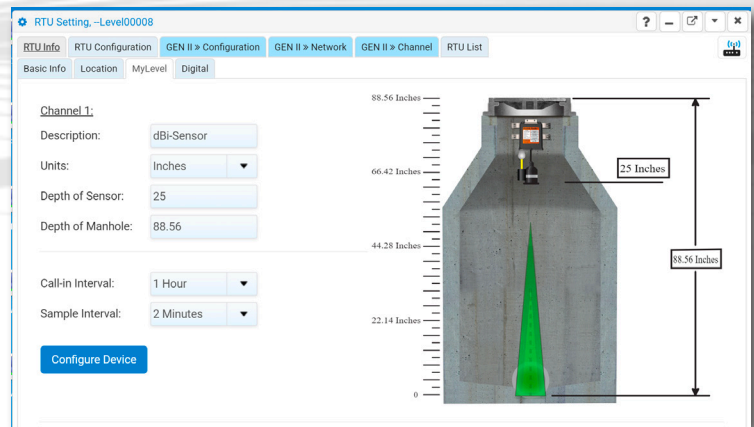
### Environmental Considerations

- **Operating Temperature Range:** 14 °F to 122 °F [-10 °C to +50 °C].
- **Ingress Protection:** IP68.

### Warranty Information

- **Enclosure and Electronics:** Two years.\*
- **Battery:** See Battery Life table.
- **Floats:** One year.

\*Prolonged exposure to high temperatures along with H2S levels higher than OSHA safety standards for sewer environments can cause damage to MyLevel and could affect warranty.



### Battery Life

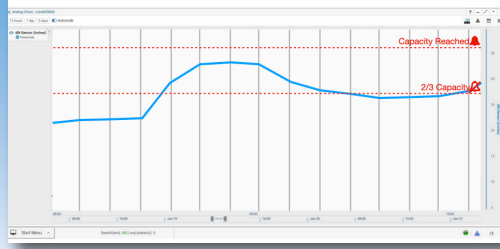
Setup	Sampling Interval	Reporting Interval	Battery Life
Power Saving Mode	30 minutes	4 hours	3 Years
Standard Mode	10 minutes	4 hours	2 Years
Enhanced Sampling Mode	4 minutes	2 hours	1 Year

Battery life variance is subject to signal quality, signal strength, and frequency of measurement.

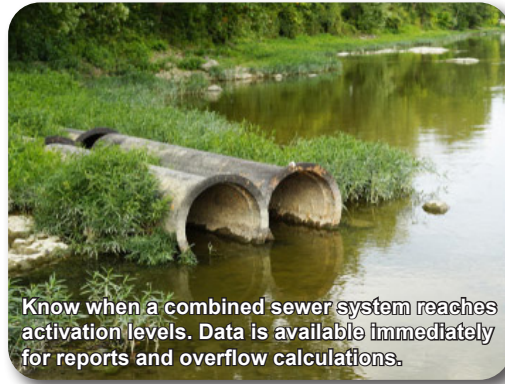
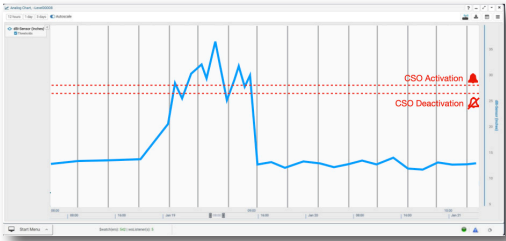
# Elevate Your Monitoring with MyLevel — Precision Redefined



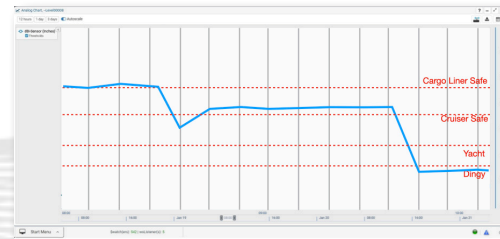
# Not Just for SSO — Use MyLevel to Monitor Many Applications



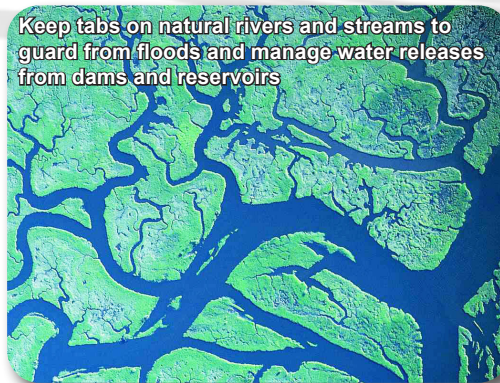
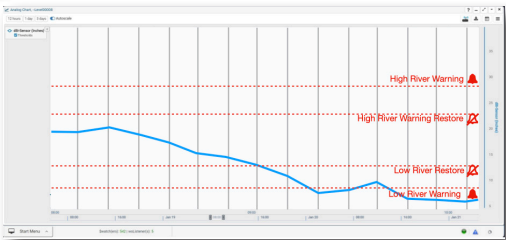
**Water Treatment Plants**



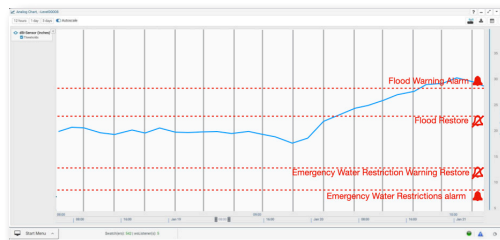
**Combined Sewer Overflow (CSO)**



**Canals**



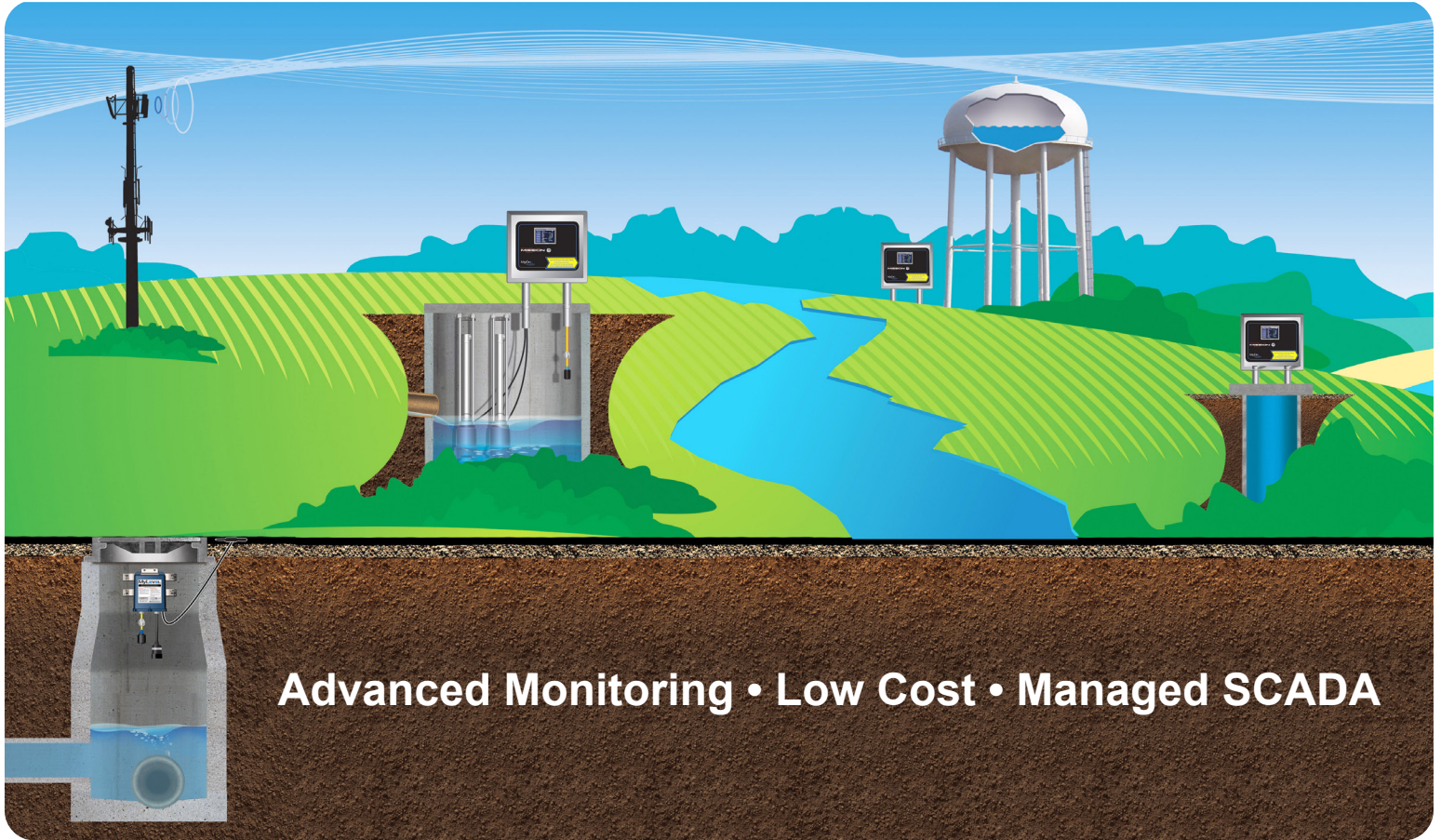
**Rivers Streams**



**Lakes Ponds Lagoons**



Proactive Alarms  Comprehensive Data  Accessible From Anywhere



- Integrate seamlessly with all Mission devices using 123SCADA or custom SCADA
- Integrate with most traditional HMIs and modeling software with OPC-UA
- Install Mission device in one morning, and start controlling costs
- Identify system issues on any device, while on the go
- Leverage more control over your system to increase performance
- Simplify compliance reporting
- Increase efficiency by deploying staff only when needed
- Monitor your water/wastewater system from anywhere



Contact Us

**MISSION**  
COMMUNICATIONS

877.993.1911 • Sales@123mc.com  
123mc.com



Model Number: M84-L  
Class I, II, III,  
Division 1 Groups D-G, T1.  
Temperature range -10 to 50° C,  
and Intrinsically Safe

Class I Zone 0,  
Ex ia IIAT1 Ga