



BinTrac® Bin Weighing Module

BinTrac basic bin weighing module consists of indicator, smart summing box, power supply, and our patented load cell bracket assemblies.

BinTrac Patented A-Frame Load Cell Assembly:

- ▶ Easy installation on existing and loaded bins using patented load cell bracket assembly
- ▶ One-year warranty covers lightning damage to load cells - extended warranty available
- ▶ The bracket does the lifting
- ▶ Only lifts bin 1/2" off the ground
- ▶ No field calibration required
- ▶ Temperature compensated



Standard



BT200

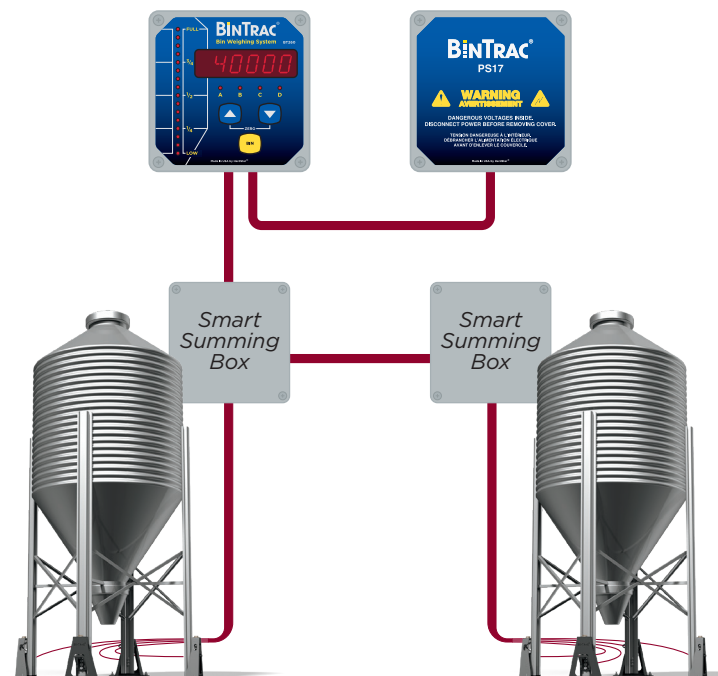
Large 6-digit



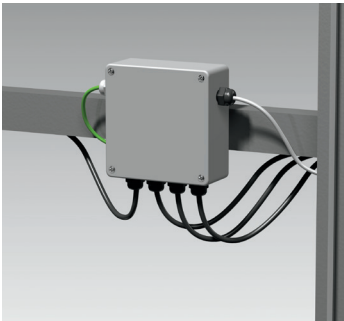
BT260

BinTrac Indicator

- ▶ Displays current bin levels
- ▶ 24-hour usage for past 4 days total and individual bins
- ▶ Last 4 fill events for all bins
- ▶ Up to 4 bins per indicator
- ▶ Locate up to 250 ft. from bin



Basic BinTrac Bin Weighing Module



BinTrac Smart Summing Box

- ▶ Minimizes load cell cabling
- ▶ Lightning Surge Protection
- ▶ Provides precision accuracy weight data to indicator



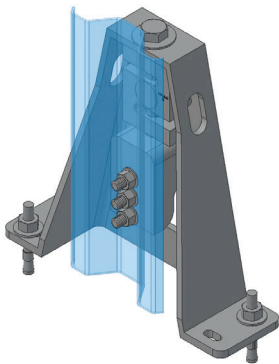
BinTrac PS17

- ▶ Provides optimum electrical isolation
- ▶ 12.6 VDC regulated voltage
- ▶ ETL listed and certified US/CAN Europe-CE

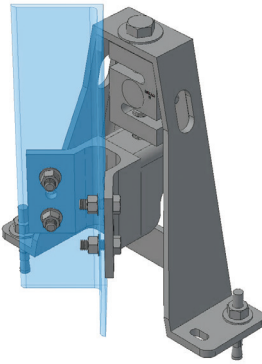
Mounting Adapters

Adapters are available for different leg styles, providing easy installation on most bins. Typical mounting adapters are shown below. Contact BinTrac for additional options.

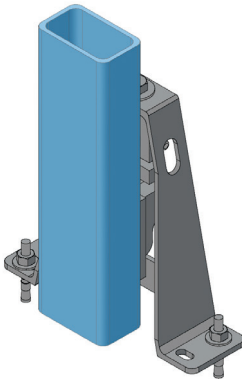
STANDARD LEG ADAPTER



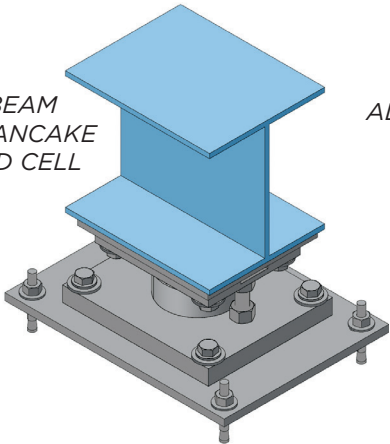
ANGLE IRON LEG ADAPTER



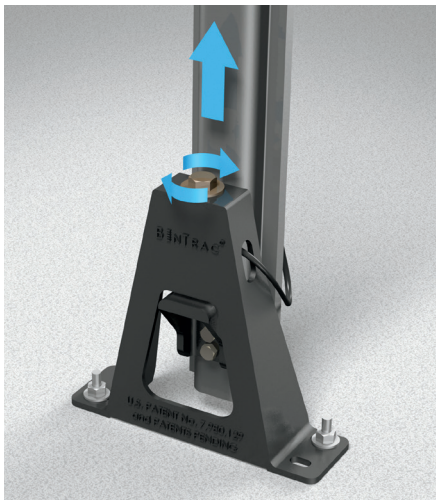
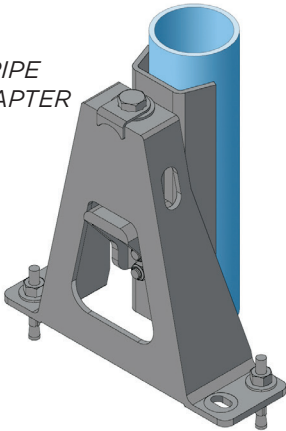
TUBE LEG ADAPTER



I-BEAM ON PANCAKE LOAD CELL



PIPE ADAPTER



Patented Bin Mounting Brackets

Installation can be completed without emptying existing bins. Brackets are secured to the bin leg and concrete pad. A few turns of the lifting bolt raises the bin and transfers the weight to the load cell.

Sales and Service/Ventes et Service
Cancoppas LIMITED
 Mississauga, Ontario 905.569.6246
 Montréal, Québec 514.697.4202
 controls@cancoppas.com www.cancoppas.com

BINTRAC[®]
 bintrac.com 1-877-246-8722