

## Intrinsically safe float circuit, speeds installation, and supports pulse inputs

Automatically recognized by the MyDro 150 and 850, the MyDro Expansion Safe Module Plus is the most powerful expansion module for the remote terminal unit (RTU). Designed for water and waste water environments, the MyDro Safe Module Plus mounts onto a DIN rail and connects directly to the RTU communications and power.

### For Hazardous Environments

Most sewer lift stations are considered hazardous locations per the National Electric Code (NEC Rule 22-704). The MyDro Safe Module Plus allows the state of a high-level float (located in the hazardous location) to be shared with both the local control panel and the Mission remote terminal unit (RTU) while complying with NEC requirements for hazardous environments. The float-sensing circuit is certified for Class I, Division I (methane) environments typical of sewer lift stations.

### Speeds Installation

This optional module connects to the MyDro 150 or 850 RTU with a quick-connect communications cable. The cable powers the module and includes the RS485 communications link between the two components. The RS485 standard is capable of reliable communications up to 4,000 feet, allowing the module to be located closer to the sensed elements. The enclosure is compatible with standard DIN rail. Terminals are front-facing.

### High Wet Well Alarms Even When AC Has Failed

High wet well events are reported even when there is no AC power to the station because of the backup battery associated with the MyDro unit.

### Relay—Local Alarm

A built-in relay can drive a local alarm light and buzzer based on float.

### Relay—Lock-Out Functions

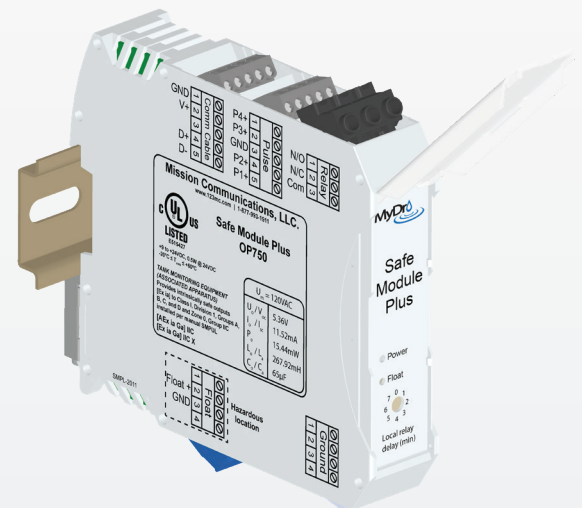
The relay can be used with safety lock-out functions. A selectable debounce (time delay) can be set for the included relay to avoid short cycling because of a bouncing float. For example, in clean water applications the relay can be included in the control circuit of a service pump and used to lock out the pump before the supply runs dry, as indicated by a normally open (N/O) low-level float. The Mission notification system can be set to dispatch a notification, such as “Service pump lock-out activated because low supply level.”

### Four Pulse Channels

The four pulse channels are typically used with rain tipping buckets and pulse-based flow meters. The inputs support dry, open collector, and wetted circuits. Non-volatile memory maintains the pulse count during extended power outages or if the communication cable is disconnected. Pulse counts accumulate even if the MyDro RTU is offline as long as it has power.

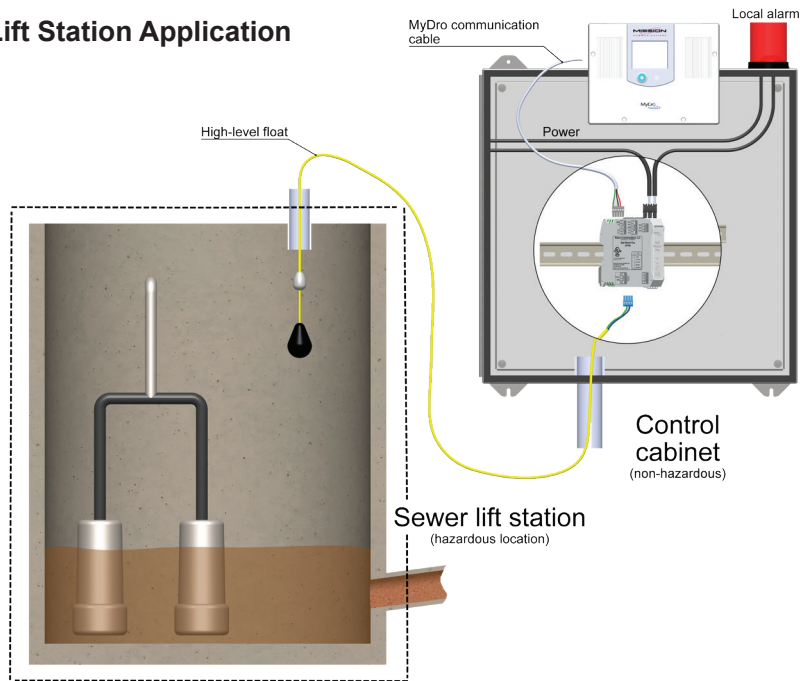
### Supervision

The MyDro reports RS485 communication failures and intrinsically safe circuit failures if they occur.

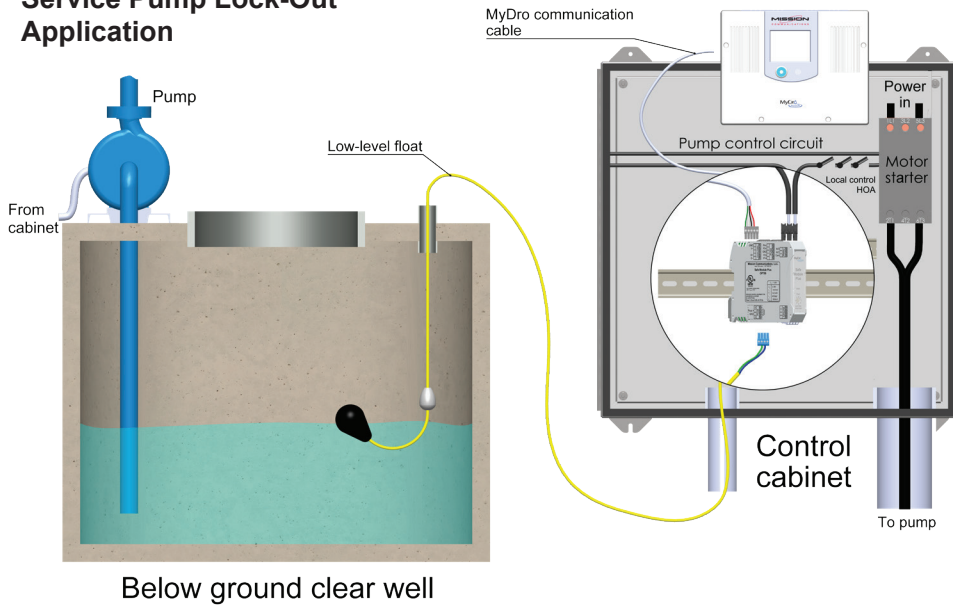


- Reduces installation time and complexity
- Includes a float circuit designed for hazardous locations typical of a sewer lift station
- Dispatches high wet well alarms even if AC power fails
- Allows multiple purposes for duplicate float signals
- Supports four pulse channels

## Sewer Lift Station Application



## Service Pump Lock-Out Application



## Specifications

### Float-Sensing Circuit (PN OP750):

- Current and voltage limited
- Certified Class I, II, III, Division I, Groups D–G T1

### Power:

- 9 to 24 VDC, 12 VDC nominal
- Supplied by MyDro (backed up by battery) when included communications cable is used
- 0.5 W max (when relay is energized), 0.2 W quiescent

### Communications Cable (PN CP500):

- 2 conductors for power
- 2 conductors for communications
- Shielded cable, grounded at MyDro via RJ45
- RS485 differential pair (D+, D-)
- Modbus RTU (slave address=200)
- Additional I/O expansion available; see MyDro Expansion Modules specification sheet

### Interposing Relay:

- Maximum 10 A at 120 VAC
- Maximum 14 gauge wire

### Relay Lock-Out Mode:

- Relay state change coincident with float change or with configurable time delay for debounce purposes
- Time delay configurable with rotary switches (0, 1, 2, 3, 4, 5, 6, 7, etc. minutes)

### Pulse Channels:

- 4 channels, common ground
- Minimum pulse width 8 msec high, 8 msec low
- Dry input (polarity insensitive)
- Open collector (polarity sensitive)
- Wetted up to 24 VDC

### Onboard LEDs:

- Power
- Float

### Physical/Environmental:

- 30 mm DIN rail mount
- 100 mm H x 100 mm D x 25 mm W (4 in x 4 in x 1 in)
- 0.5 lb
- -20° C to 60° C, non-condensing
- Enclosure is flame resistant polyamide
- ROHS certified (lead-free)

### Includes:

- Safe Module Plus
- 3-in DIN rail with screws
- 4 x 4 removable terminals
- Communications cable
- Installation instructions

### Service:

- Expansion service fee—12 months (PN SPOP-12)

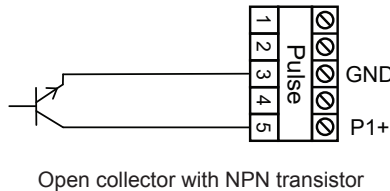
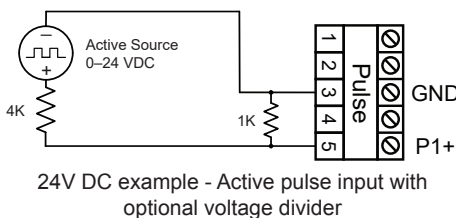
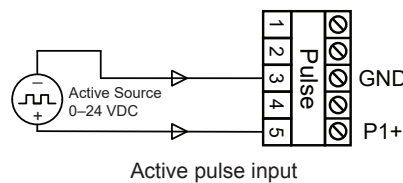
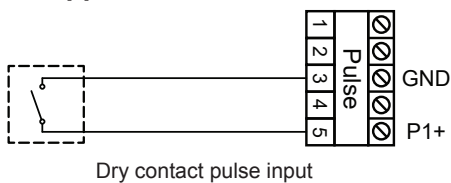
### Certification:

- (c) UL, UL (US), E515427

### Warranty:

- One year manufacturing and material warranty

## Pulse Applications



(877) 993-1911 • sales@123mc.com • 123mc.com

©2022 Mission Communications. The Mission Communications logo is property of Mission Communications. All Rights Reserved. Protected under patents 7,216, 145. Specifications subject to change without notice.