



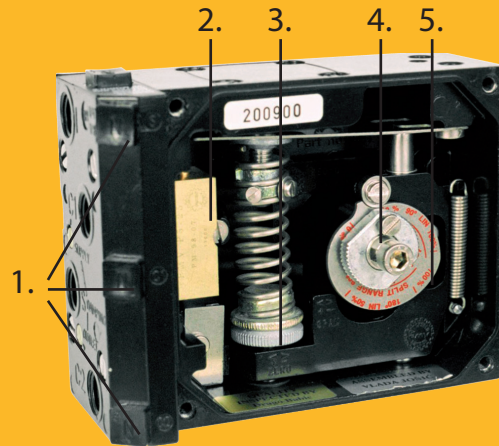
P5 Pneumatic Positioner

Product
Information



Experience In Motion

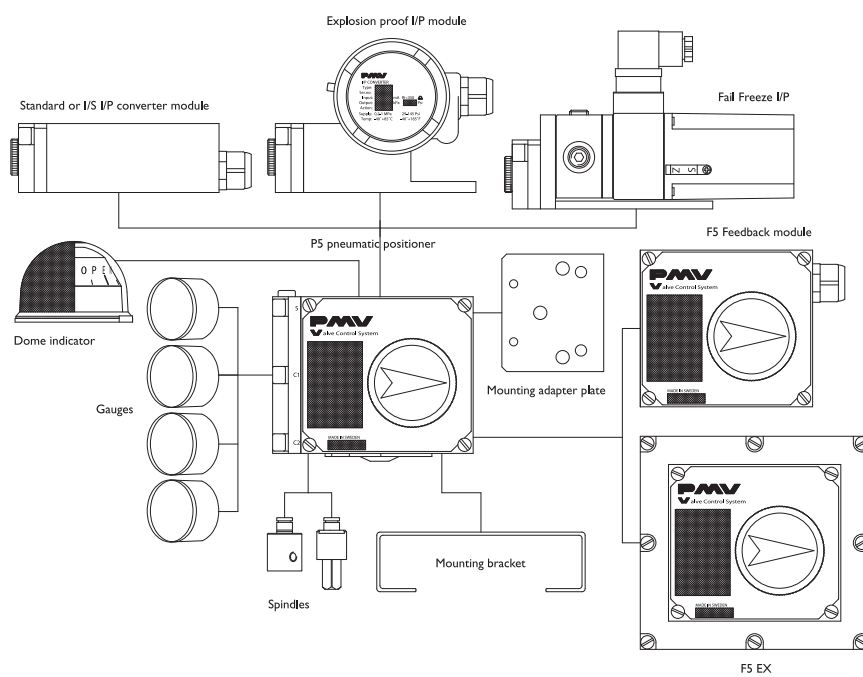
1. Gauge ports
2. Gold plated spool valve
3. Simple calibration, external zero adjustment
4. Stainless cam
5. Simple cam locking



P5 Pneumatic Positioner

P5

- Sturdy, robust simple design
- Pilot valve with high gain
- Large, bright position indicator flat or Dome
- Stainless steel cam
- Threaded vent port
- Easy to add on feedback unit or I/P converter
- External zero adjustment
- Gauge ports standard





Technical data

Input signal	20 –100 KPa/3–15 Psi (6–30 Psi option)
Linearity	≤ 0.5%*
Hysteresis	≤ 0.5%*
Repeatability	≤ 0.5%*

Gain factor at: 600 KPa/87 Psi	High Performance Version	Normal Gain Version
	Min: 1000 KPa/KPa	Min: 450 KPa/KPa
	Min: 66%/ % ISA 575.13-1989	Min: 30%/ %

Max. air consumption at supply pressure:

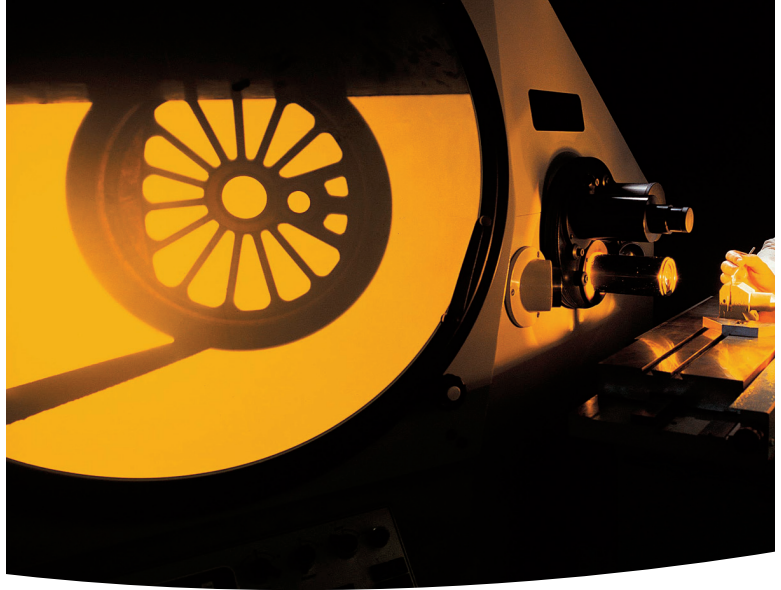
Supply Pressure	High Performance Version	Normal Gain Version
0.2 MPa/29 Psi	6.1 nl/min (0.22 SCFM)	2.7 nl/min (0.1 SCFM)
0.4 MPa/58 Psi	13.6 nl/min (0.48 SCFM)	6.1 nl/min (0.21 SCFM)
0.6 MPa/87 Psi	22 nl/min (0.78 SCFM)	9.9 nl/min (0.35 SCFM)
0.8 MPa/116 Psi	30.5 nl/min (1.08 SCFM)	13.7 nl/min (0.48 SCFM)
1 MPa/145 Psi	39 nl/min (1.38 SCFM)	17.5 nl/min (0.62 SCFM)

Min. air delivery at supply pressure:

Supply Pressure	High Performance Version	Normal Gain Version
0.2 MPa/29 Psi	200 nl/min (6.9 SCFM)	156 nl/min (5.5 SCFM)
0.4 MPa/58 Psi	370 nl/min (12.8 SCFM)	288 nl/min (10.1 SCFM)
0.6 MPa/87 Psi	540 nl/min (18.8 SCFM)	421 nl/min (14.8 SCFM)
0.8 MPa/116 Psi	710 nl/min (24.7 SCFM)	553 nl/min (19.4 SCFM)
1 MPa/145 Psi	880 nl/min (30.6 SCFM)	686 nl/min (24 SCFM)

Position sensitivity	None	
Supply pressure effect	Max. 1MPa/150 Psi	
Temperature range	-20°C to +85°C/(-4°F to +185°F)	
Low temp option	-40°C to +85°C/(-40°F to +185°F)	
Connector threads	1/4" NPT or G (BSP)	
Gauge threads	1/8" NPT or G (BSP)	
Weight	1.1 kg/2.4 lbs	
Housing	Die cast aluminum	
Surface treatment	ED Epoxy paint, black	
Fasteners	A2/A4 Stainless	
Ingress protection	IP 66/NEMA 4	ATEX II 1 GD

* Percent of full scale



Modular

Simple to add on:

- Feedback Unit F5
- Dome Style Indicator
- I/P Converter



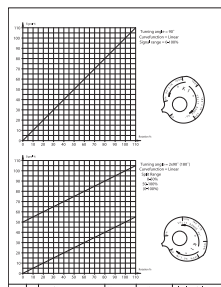
F5

P5 Series Coding

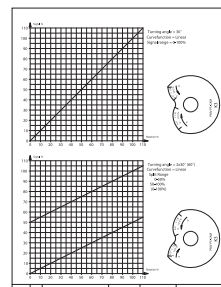
Model no	PP5XX	Single and (Double acting pneumatic)
	PA5XX	Single and (Double acting pneumatic, ATEX)
Spoolvalve	HP	High performance
	LB	Standard performance
Connection threads	G	1/4" G air
	N	1/4" NPT air, M20 x 1,5 electrical
Surface treatment	U	Epoxy, ED
	M	Tufram R66
Spindle	01	14 mm female
	23	Rotary, Namur, VDI/VDE 3845
Cam	K01	Linear 90 deg
	K02	Linear 30/60 deg
Frontcover	PV9	90 deg, 0-100% scale
	PV6	60 deg, 0-100% scale
	PV4	45 deg, 0-100% scale
	PV3	30 deg, 0-100% scale
	PV0	Blank, no scale
Function	D	Direct
	R	Reverse
Indicator	A	Indicator
	B	Blind, No indicator
	H	Dome style, H5
Input signal	3	3-15 Psi (0,2-1 bar)
	6	6-30 Psi (0,4-2 bar)
Seals/Temperature	Z	Nitrile, NBR -20 to +85 deg C
	Q	Silicon, Q -40 to +85 deg C
	B	Gas sealed, w. Q Seals

P 5 - - - - - K - P V - - - - -

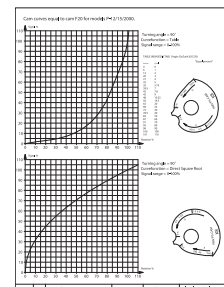
Cams



K1

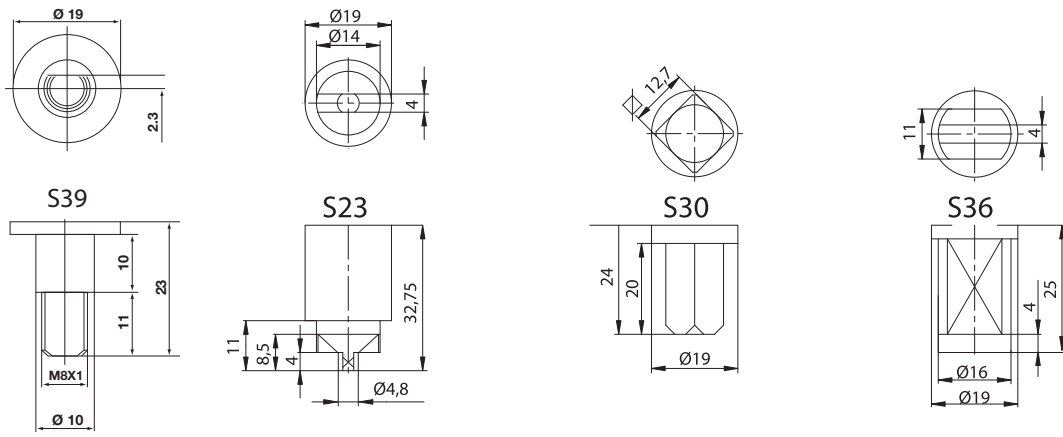


K3

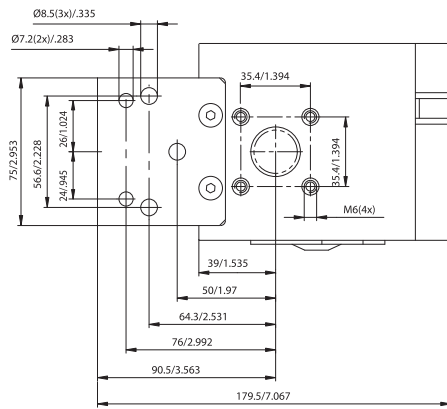


K8

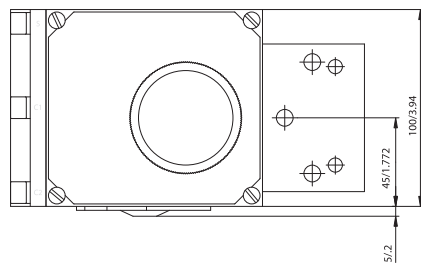
Spindles



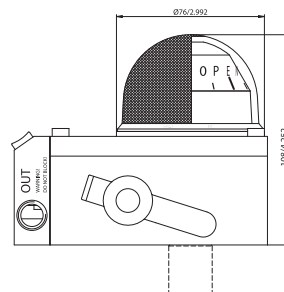
Dimensions drawings (mm)



P5



P5



P5 with H5



PMV Automation AB
Korta Gatan 9
SE-171 54 SOLNA
SWEDEN
Phone: +46 (0)8-555 106 00
E-mail: infopmv@flowserve.com

PMV USA
14219 Westfair West Drive
Houston, TX 77041, USA
Phone: +1 281 671 9209
Fax: +1 281 671 9268
E-mail: pmvsales@flowserve.com

Flowserve Flow Control
Burrell Road, Haywards Heath
West Sussex RH16 1TL
Phone: +44(0)1444 314400
E-mail: pmvuksales@flowserve.com

Flowserve Flow Control Benelux
Rechtzaad 17
4703 RC Roosendaal
THE NETHERLANDS
Phone: +31 (0) 30 6771946
Fax: +27 (0) 30 6772471
E-mail: fcbinfo@flowserve.com

Flowserve Flow Control GmbH
Rudolf-Plank Strasse 2
D-76275 Ettlingen
GERMANY
Phone: +49 (0) 7243 103 0
Fax: +49 (0) 7243 103 222
E-mail: argus@flowserve.com

Flowserve S.p.a.
Via Prealpi, 30
20032 Cormano (Milano)
ITALY
Phone: +39 (0) 2 663 251
Fax: +39 (0) 2 615 18 63
E-mail: infoitaly@flowserve.com

Flowserve Corporation
No. 35, Baiyu Road
Suzhou Industrial Park
Suzhou 215021, Jiangsu Province,
PRC
Phone: +86-512-6288-1688
Fax: +86-512-6288-8737

Flowserve (China)
585, Hanwei Plaza
7 Guangzhou Road
Beijing, China 100004
Phone: +86 10 6561 1900

Flowserve Pte Ltd
No. 12 Tuas Avenue 20
Singapore 638824
Phone: +65 6879 8900
Fax: +65 6862 4940

Flowserve do Brasil Ltda
Rua Tocantins, 128 - Bairro Nova Gerti
São Caetano do Sul,
São Paulo 09580-130 Brazil
Phone: +5511 4231 6300
Fax: +5511 4231 6329 - 423

www.pmv.nu

p/n:FCDPMENBR0008-03



Hazardous Locations

ATEX II 1 GD

R&H:Grafi&co:AB:Ordem:35388

Flowserve Corporation has established industry leadership in the design and manufacture of its products. When properly selected, this Flowserve product is designed to perform its intended functions safely during its useful life. However, the purchaser or user of Flowserve products should be aware that Flowserve products might be used in numerous applications under a wide variety of industrial service conditions. Although Flowserve can (and often does) provide general guidelines, it cannot provide specific data and warnings for all possible applications. The purchaser/user must therefore assume the ultimate responsibility for the proper sizing and selection, installation, operation, and maintenance of Flowserve products. The purchaser/user should read and understand the Installation and Maintenance (I&M) instructions included with the product, and train its employees and contractors in the safe use of Flowserve products in connection with the specific application.

While the information and specifications contained in this literature are believed to be accurate, they are supplied for informative purposes only and should not be considered certified or a guarantee of satisfactory results by reliance thereon. Nothing contained herein is to be construed as a warranty or guarantee, express or implied, regarding any matter with respect to this product. Because Flowserve is continually improving and upgrading its product design, these specifications, dimensions and information contained herein are subject to change without notice. Should any question arise concerning these provisions, the purchaser/user should contact Flowserve Corporation at any one of its worldwide operations or offices.

©2008 Flowserve Corporation, Irving, Texas, USA. Flowserve and PMV are registered trademarks of Flowserve Corporation.

Experience In Motion